

GENERAL NOTES

1. ALL MATERIALS AND WORKMANSHIP SHALL BE IN ACCORDANCE WITH STANDARD SPECIFICATIONS FOR ROADS AND STRUCTURES, EDITION OF 2002, NORTH CAROLINA DEPARTMENT OF TRANSPORTATION (HEREIN CALLED STANDARD SPECIFICATIONS), EXCEPT AS NOTED HEREIN, ELSEWHERE ON PLANS OR IN THE SPECIAL PROVISIONS.
2. THE CONTRACTOR SHALL PROVIDE ALL MEASURES NECESSARY TO PROTECT THE EXISTING STRUCTURES AND SAFETY OF WORKMEN DURING CONSTRUCTION. THE CONTRACTOR SHALL COMPLY WITH ALL APPLICABLE REQUIREMENTS OF OSHA AND OTHER GOVERNING BODIES HAVING JURISDICTION AT THE SITE.
3. ALL RAIL CLIPS AND RAIL BASE PLATES SHALL BE ASTM A709 GRADE 36 & GALVANIZED IN ACCORDANCE WITH THE STANDARD SPECIFICATIONS.

CONCRETE

1. CONCRETE STRENGTH & CLASS
 CLASS AA 4000 PSI AT CONCRETE SLAB POUR 1
 CLASS AA SPECIAL 4000 PSI AT PROPOSED TRENCH DRAINS IN MAINT. BLDG AND CONCRETE SLAB POUR 2.
2. ALL REINFORCING STEEL SHALL BE GRADE 60.
3. MAINTAIN THE FOLLOWING CONCRETE COVER FOR REINFORCING STEEL UNLESS OTHERWISE NOTED:
 3" CONCRETE CAST AGAINST AND PERMANENTLY EXPOSED TO EARTH
 CONCRETE EXPOSED TO EARTH OR WEATHER
 2" PRINCIPLE REINFORCEMENT
 1 1/2" STIRRUPS AND TIES
4. ALL LAP SPLICES SHALL BE CLASS C.
5. TRANSVERSE JOINTS IN THE SLABS ON GRADE SHALL BE SAWED PRIOR TO INSTALLATION OF RUNNING RAILS. (NOTE THAT FORMING OF TRANSVERSE JOINTS IS ACCEPTABLE)
6. CAST-IN-PLACE DOWELS SHALL CONFORM TO ARTICLE 1070-6 OF THE STANDARD SPECIFICATIONS.

FOUNDATION

1. THE GEOTECHNICAL ENGINEERING ANALYSIS REPORT, PREPARED BY TIERRA, INC. DATED MARCH 25, 2005 IS INCLUDED IN THE PROJECT MANUAL.
2. SITE PREPARATION FOR TRACK 3 ALIGNMENT REQUIRES REMOVAL OF THE EXISTING TRACK ALIGNMENT, INCLUDING RAIL, TIMBER TIES, BALLAST AND SUBBALLAST. (NOTE: RAIL REMOVAL IS LIMITED TO RAIL BEYOND THE FIRST RAIL JOINT FOR EACH RAIL PROJECTING FROM THE MAINTENANCE BUILDING, BOTH RAILS PROJECTING FROM THE MAINTENANCE BUILDING ARE EMBEDDED INTO THE CONCRETE FLOOR SLAB OF THE MAINTENANCE BUILDING AND MUST BE LEFT INTACT. FOR PROPOSED RAIL JOINT LOCATION, SEE SHEET S4 AND S8. THE BALLAST AND SUBBALLAST MATERIAL MAY BE REUSED PROVIDED IT MEETS PROJECT SPECIFICATION REQUIREMENTS.
3. IF TEMPORARY SHORING IS REQUIRED ADJACENT TO THE EXISTING BUILDINGS FOR FOUNDATION EXCAVATION, SHOP DRAWINGS SHALL BE SUBMITTED FOR REVIEW & APPROVAL.
4. ALL SUBGRADE AREA SHALL BE SUBJECT TO PROOF ROLLING, IN THE PRESENCE OF A GEOTECHNICAL ENGINEER, TO DETERMINE AREAS OF INSTABILITY. AREAS OF INSTABILITY SHALL BE EVALUATED BY A GEOTECHNICAL ENGINEER TO DETERMINE EXTENT OF REPAIR.
5. ONCE SITE GRADING HAS BEEN COMPLETED, ALL EXCAVATION BOTTOMS SHALL BE EVALUATED BY A GEOTECHNICAL ENGINEER. ANY SOFT, LOOSE, OR UNSUITABLE MATERIALS SHALL BE OVER EXCAVATED AS DIRECTED BY A GEOTECHNICAL ENGINEER. THE UNDERCUT MATERIAL SHOULD BE BACKFILLED WITH SELECT GRANULAR MATERIAL HAVING LESS THAN 10% PASSING THE #200 SIEVE. THE GRANULAR MATERIALS SHOULD BE PLACED IN LOOSE EIGHT INCH LIFTS AND COMPACTED TO 95% OF STANDARD PROCTOR DRY DENSITY (+/-) 3% OF OPTIMUM MOISTURE CONDITIONS AS DETERMINED BY ASTM D-698. FIELD DENSITY TESTS SHOULD BE PERFORMED ON EACH LIFT OF FILL PLACED TO VERIFY COMPLIANCE WITH COMPACTION SPECIFICATIONS.

12/27/2006 3:10:26 PM t:\rail\projects\090064\002_cy\plans\064str_notes.sht

NO.	BY	DATE	REVISION

PREPARED BY:
Carter Burgess
 C & B ARCHITECTS / ENGINEERS, P.C.
 5811 GLENWOOD AVENUE, SUITE 300
 RALEIGH, NORTH CAROLINA 27612
 PH: 919-783-5988

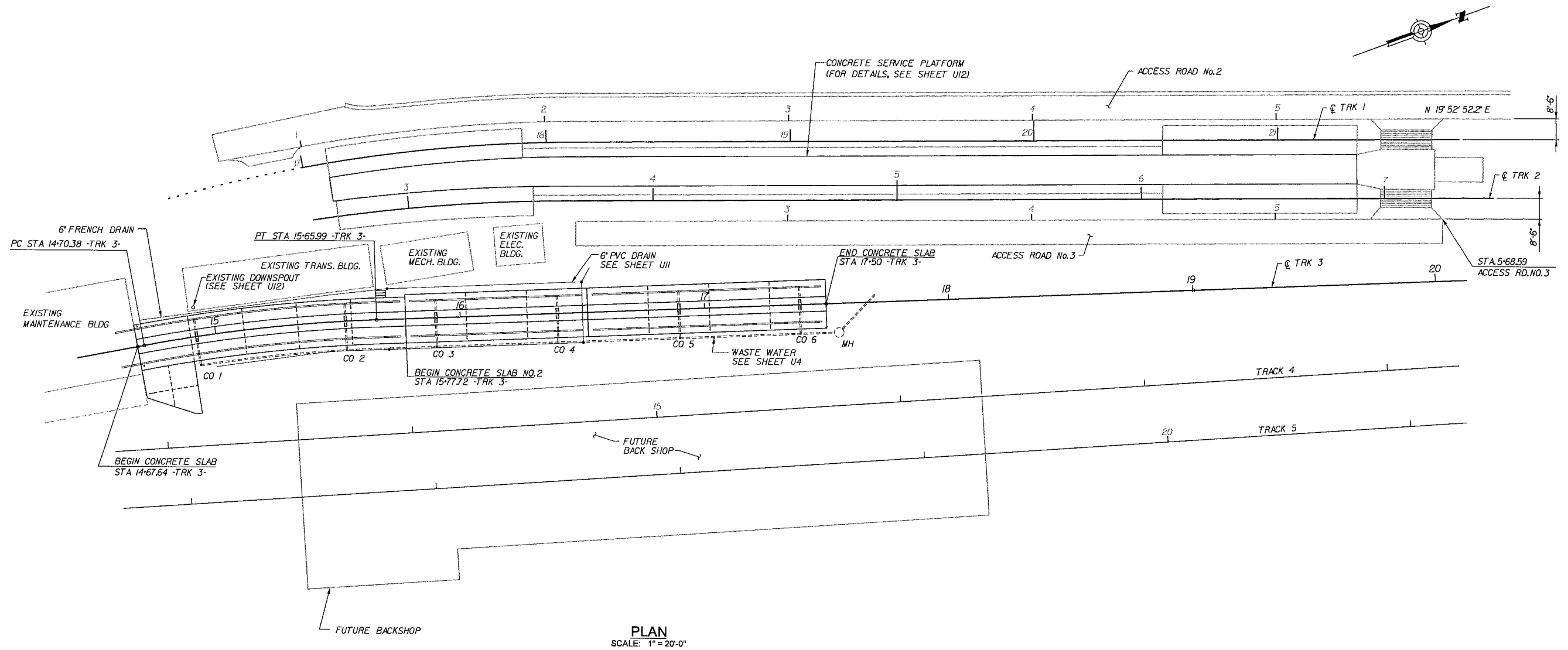
THIS DOCUMENT ORIGINALLY
 ISSUED AND SEALED BY
 STEVEN K. DOERRER, 16572,
 ON AUGUST 10, 2006.
 THIS MEDIA SHALL NOT
 BE CONSIDERED A
 CERTIFIED DOCUMENT.



NORTH CAROLINA DEPARTMENT OF TRANSPORTATION
RAIL DIVISION
 OPERATIONS BRANCH

PROJECT		CAPITAL YARD MAINTENANCE FACILITY	
TITLE		STRUCTURAL SLAB NOTES	
LOCATION		860 CAPITAL BOULEVARD, RALEIGH, NC	
DGN BY	JBT	RAILROAD	CSXT
DWN BY	BAH	VAL SEC	V1-NC, L-7, 5-16
CHK BY	SKD	DATE	07-21-06
SCALE		NONE	
MILE POST		S-156.1	
SHEET		S1 OF S9	

12/27/2006 3:10:39 PM t:\rail\projects\090064\002_cy\plans\064str_site.sht



PLAN
SCALE: 1" = 20'-0"

NO.	BY	DATE	REVISION

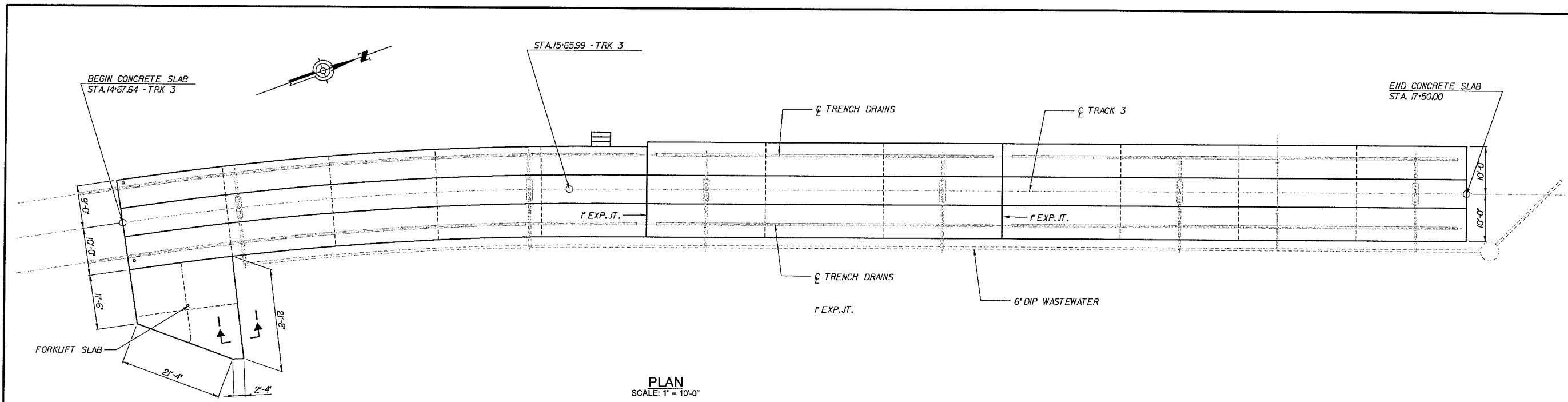
PREPARED BY:
Carter Burgess
C & B ARCHITECTS / ENGINEERS, P.C.
5811 GLENWOOD AVENUE, SUITE 300
RALEIGH, NORTH CAROLINA 27612
PH: 919-783-5986

THIS DOCUMENT ORIGINALLY
ISSUED AND SEALED BY
STEVEN K. DOERRER, 16572,
ON AUGUST 10, 2006.
THIS MEDIA SHALL NOT
BE CONSIDERED A
CERTIFIED DOCUMENT.

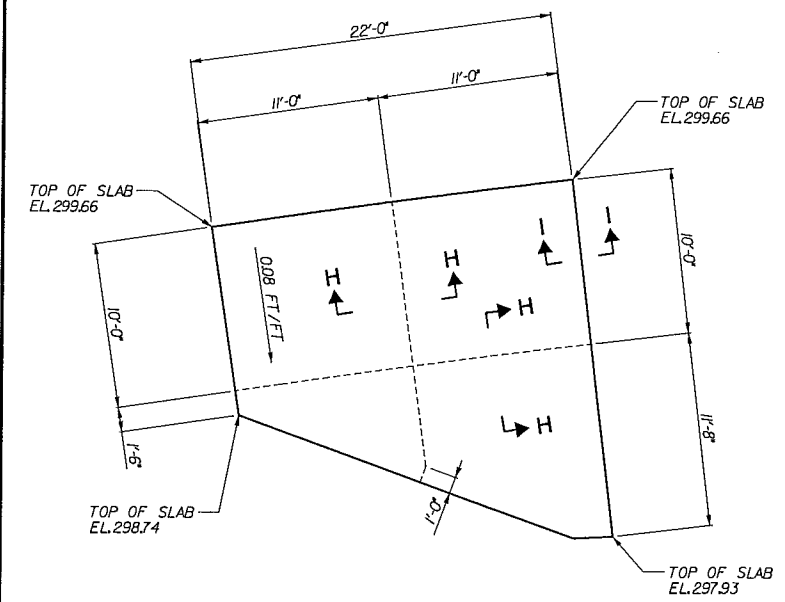


NORTH CAROLINA DEPARTMENT OF TRANSPORTATION
RAIL DIVISION
OPERATIONS BRANCH

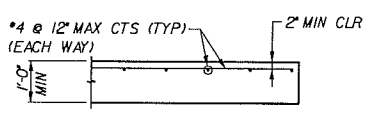
PROJECT		CAPITAL YARD MAINTENANCE FACILITY	
TITLE		STRUCTURAL SLAB PLAN	
LOCATION 860 CAPITAL BOULEVARD, RALEIGH, NC			
DGN BY	JBT	RAILROAD	CSXT
MILE POST	S-156.1		
DWN BY	BAH	VAL SEC	V1-NC, L-7, 5-16
CHK BY	SKD	DATE	07-21-06
SCALE	1" = 20'		
SHEET			S2 OF S9



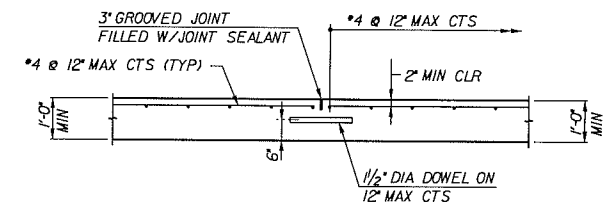
PLAN
SCALE: 1" = 10'-0"



CONTROL JOINT LAYOUT
FOR FORKLIFT SLAB



SECTION I-I
SCALE: 1/2" = 1'-0"




SECTION H-H
SCALE: 1/2" = 1'-0"

t:\rail\projects\090064_002_cyl\plans\064str_ils_pln.sht
 3:10:50 PM
 12/27/2006

NO.	BY	DATE	REVISION

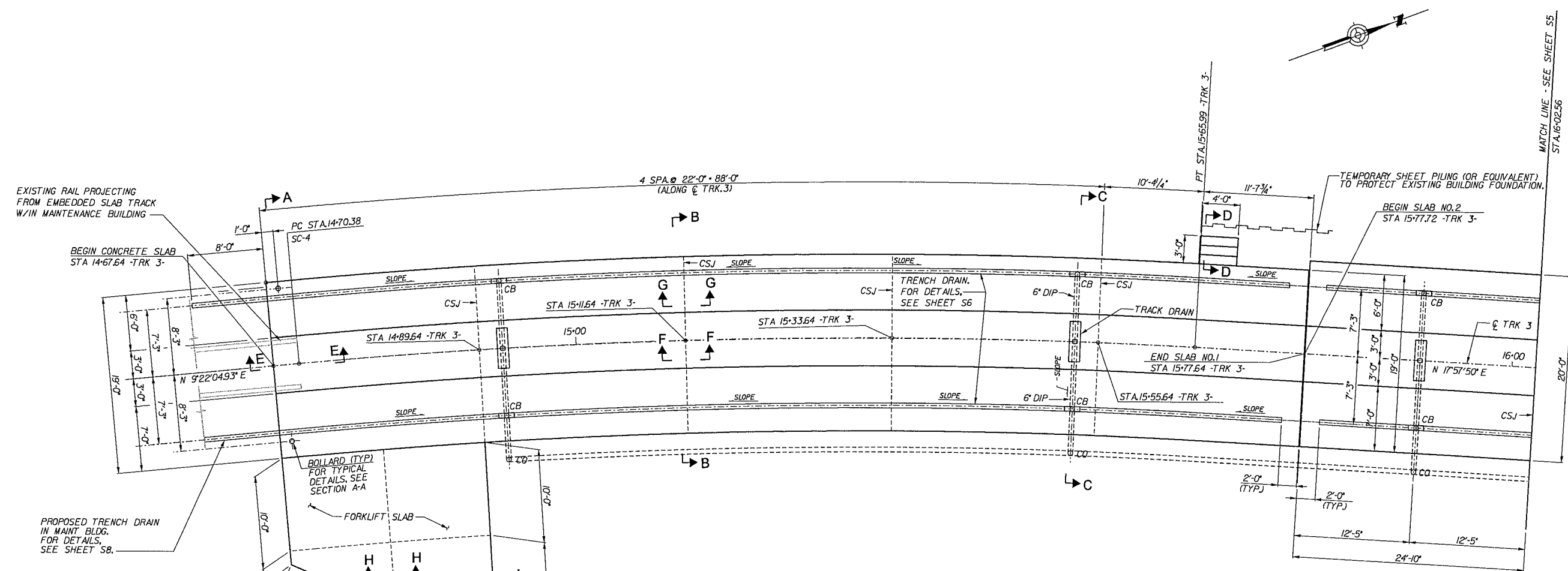
PREPARED BY:
Carter Burgess
 C & B ARCHITECTS / ENGINEERS, P.C.
 5811 GLENWOOD AVENUE, SUITE 300
 RALEIGH, NORTH CAROLINA 27612
 PH: 919-763-5988

THIS DOCUMENT ORIGINALLY
 ISSUED AND SEALED BY
 STEVEN K. DOERRER, 16572,
 ON AUGUST 10, 2006.
 THIS MEDIA SHALL NOT
 BE CONSIDERED A
 CERTIFIED DOCUMENT.

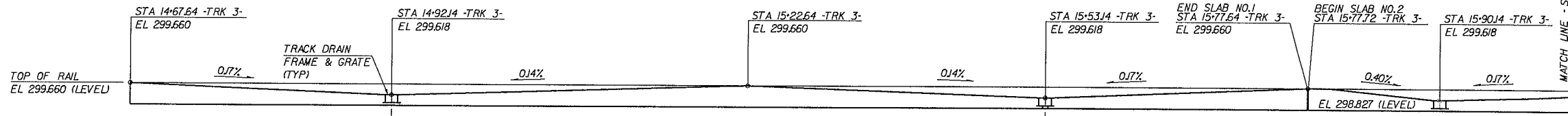
NORTH CAROLINA DEPARTMENT OF TRANSPORTATION

RAIL DIVISION
 OPERATIONS BRANCH

PROJECT		CAPITAL YARD MAINTENANCE FACILITY	
TITLE		FORKLIFT AND TRACK NO. 3 CONCRETE SLAB	
LOCATION 860 CAPITAL BOULEVARD, RALEIGH, NC			
DGN BY	JBT	RAILROAD	CSXT
MILE POST	S-156.1		
DWN BY	BAH	VAL SEC	V1-NC, L-7, 5-16
CHK BY	SKD	DATE	07-21-08
SCALE			
			SHEET S3 OF S9

- NOTES:**
1. PLAN VIEW OF CONCRETE SLAB DEPICTS INTERMEDIATE CONDITION BETWEEN POUR 1 & POUR 2.
 2. FOR SECTION A-A, B-B, C-C, SEE SHEET S6.
FOR SECTION D-D, E-E, F-F, G-G, SEE SHEET S8.
FOR SECTION H-H & I-I, SEE SHEET S3.



PLAN
SCALE: 3/16" = 1'-0"




TRACK NO. 3 CONCRETE SLAB POUR 2 PROFILE
(NOT TO SCALE)

12/27/2006 3:11:04 PM t:\rail\projects\090064_002_cyl\plans\064str_js_prl.sht

NO.	BY	DATE	REVISION

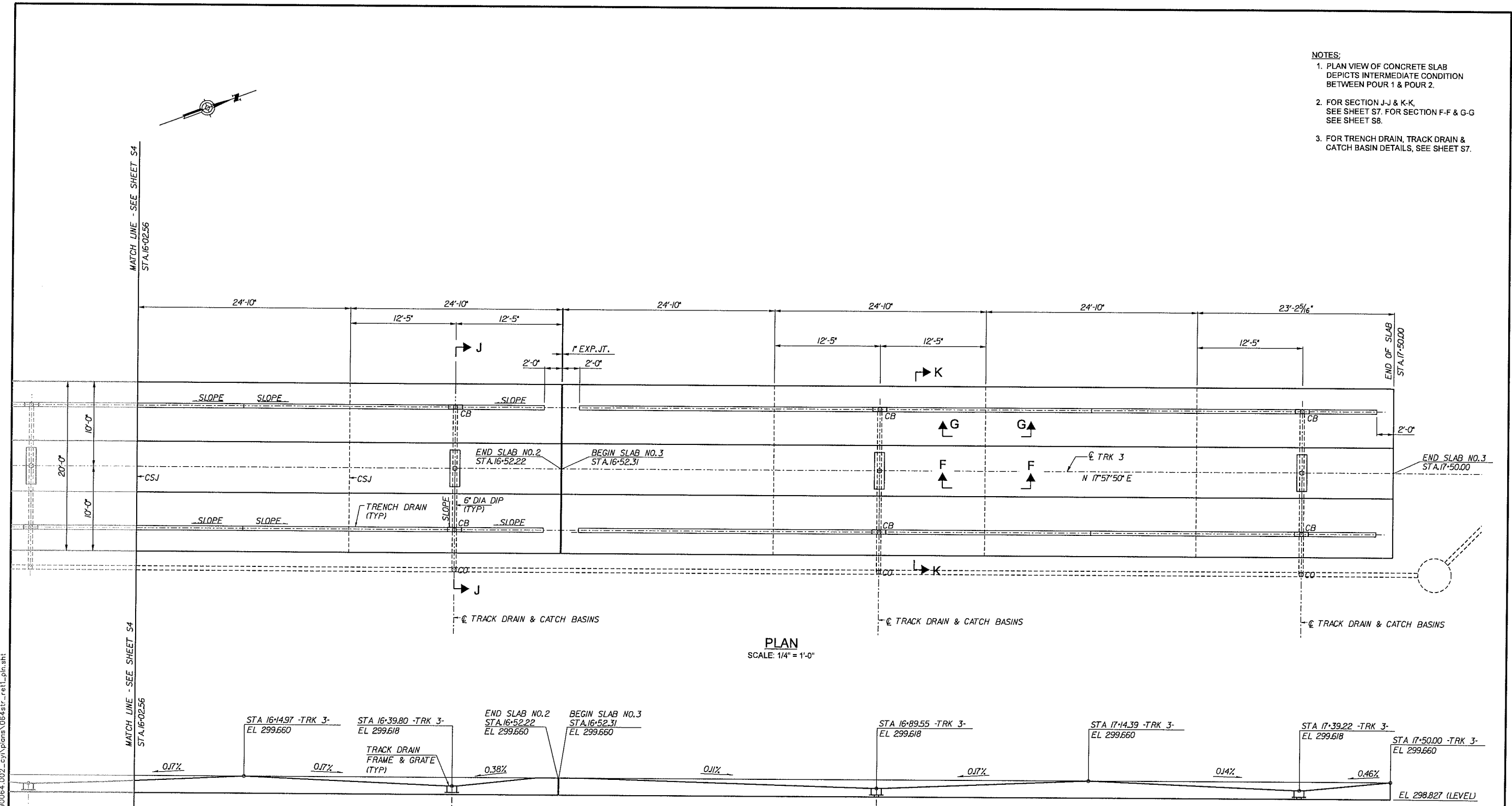
PREPARED BY:
CarterBurgess
 C & B ARCHITECTS / ENGINEERS, P.C.
 5811 GLENWOOD AVENUE, SUITE 300
 RALEIGH, NORTH CAROLINA 27612
 PH: 919-753-5988

THIS DOCUMENT ORIGINALLY ISSUED AND SEALED BY STEVEN K. DOERRER, 16572, ON AUGUST 10, 2006. THIS MEDIA SHALL NOT BE CONSIDERED A CERTIFIED DOCUMENT.

NORTH CAROLINA DEPARTMENT OF TRANSPORTATION

RAIL DIVISION
 OPERATIONS BRANCH

PROJECT: CAPITAL YARD MAINTENANCE FACILITY		TITLE: TRACK NO.3 CONCRETE SLAB - PLAN (1)	
LOCATION: 860 CAPITAL BOULEVARD, RALEIGH, NC			
DGN BY: JBT	RAILROAD: CSXT	MILE POST: S-156.1	
DWN BY: BAH	VAL SEC: V1-NC, L-7, 5-16		
CHK BY: SKD	DATE: 07-21-06	SCALE: 3/16" = 1'-0"	SHEET S4 OF S9

- NOTES:**
1. PLAN VIEW OF CONCRETE SLAB DEPICTS INTERMEDIATE CONDITION BETWEEN POUR 1 & POUR 2.
 2. FOR SECTION J-J & K-K, SEE SHEET S7. FOR SECTION F-F & G-G SEE SHEET S8.
 3. FOR TRENCH DRAIN, TRACK DRAIN & CATCH BASIN DETAILS, SEE SHEET S7.



PLAN
SCALE: 1/4" = 1'-0"

CONCRETE SLAB POUR 2 PROFILE
(NOT TO SCALE)

I:\rail\projects\090064_002_cy\plans\064str_ref\plan.sht

12/27/2006 3:11:16 PM

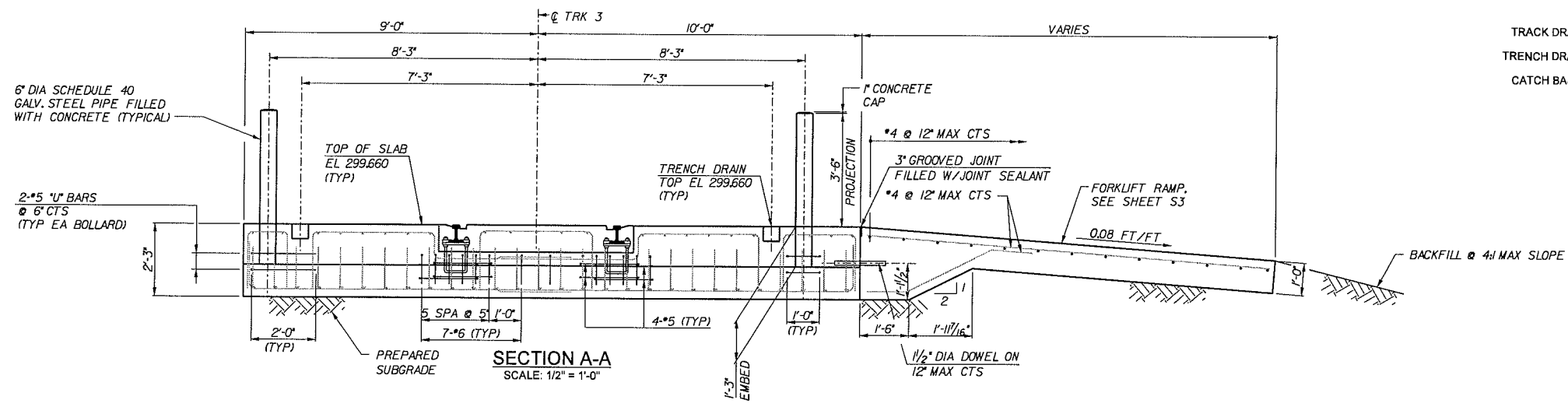
NO.	BY	DATE	REVISION

PREPARED BY:
Carter Burgess
C & B ARCHITECTS / ENGINEERS, P.C.
5811 GLENWOOD AVENUE, SUITE 300
RALEIGH, NORTH CAROLINA 27612
PH: 919-783-5888

THIS DOCUMENT ORIGINALLY ISSUED AND SEALED BY STEVEN K. DOERRER, 16572, ON AUGUST 10, 2006. THIS MEDIA SHALL NOT BE CONSIDERED A CERTIFIED DOCUMENT.

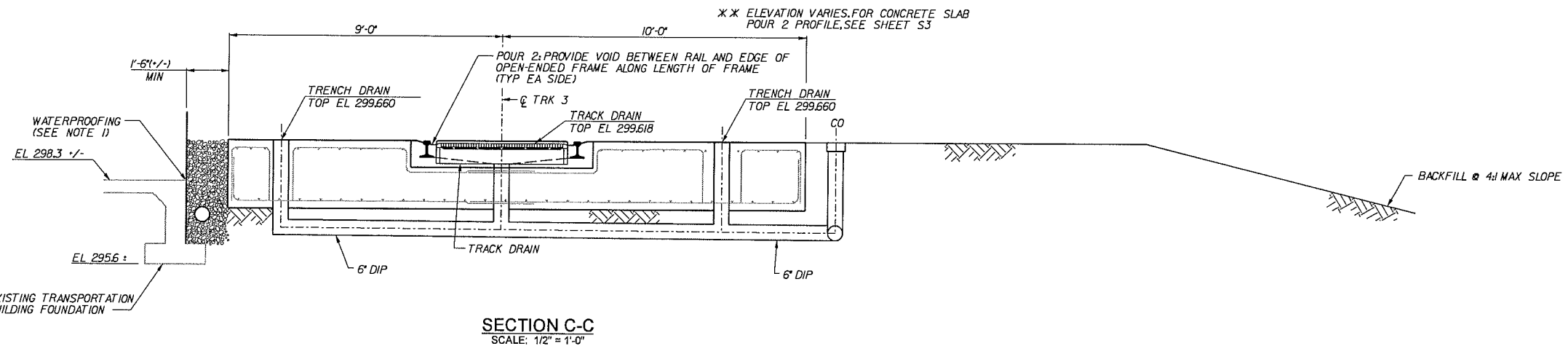
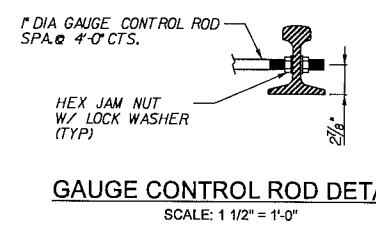
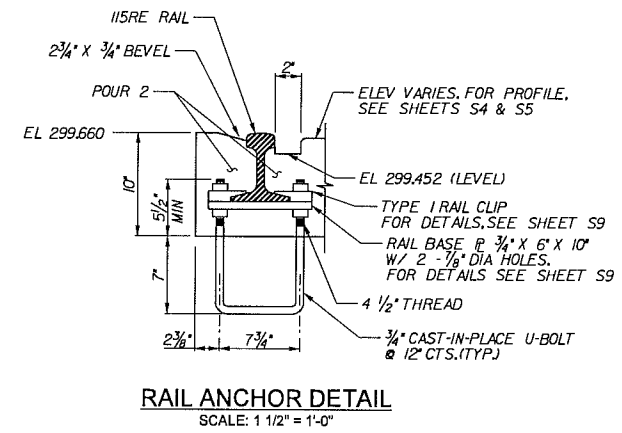
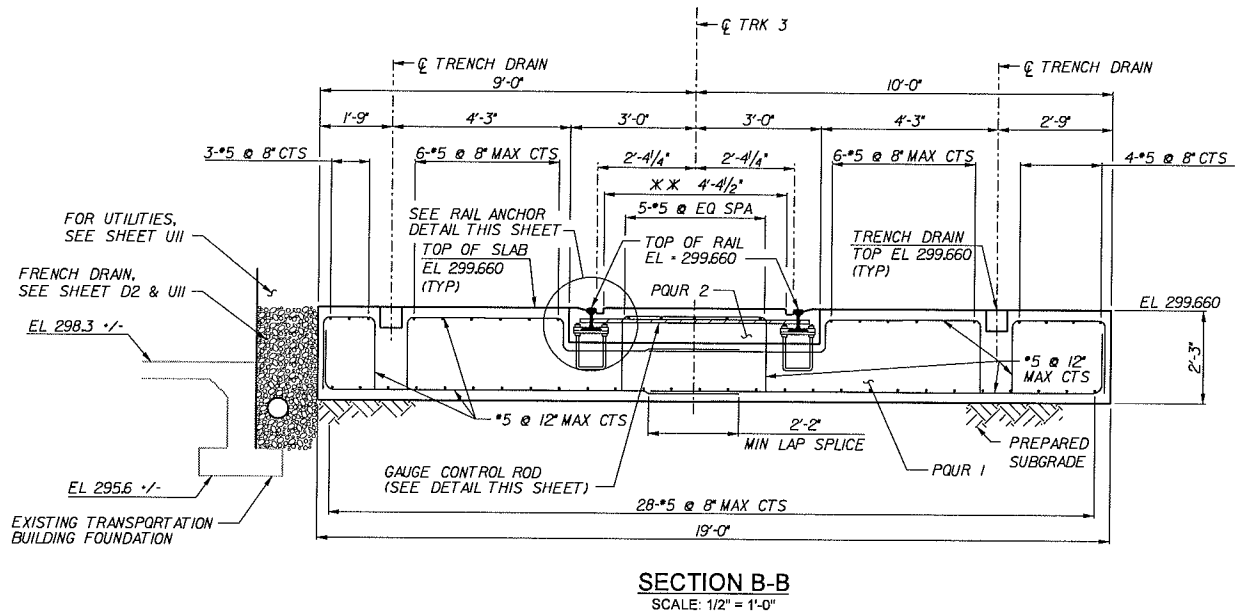
NORTH CAROLINA DEPARTMENT OF TRANSPORTATION
RAIL DIVISION
OPERATIONS BRANCH

PROJECT: CAPITAL YARD MAINTENANCE FACILITY		TITLE: TRACK NO. 3 CONCRETE SLAB - PLAN (2)	
LOCATION: 860 CAPITAL BOULEVARD, RALEIGH, NC			
DGN BY: JBT	RAILROAD: CSXT	MILE POST: S-156.1	
DWN BY: BAH	VAL SEC: V1-NC, L-7, 5-16		
CHK BY: SKD	DATE: 07-21-06	SCALE: 1" = 50'	SHEET S5 OF S9



TRACK DRAIN: NEENAH R-3420 TRACK DRAIN FRAME & GRATE OR EQUIVALENT
 TRENCH DRAIN: ABT, INC. POLYDRAIN CHANNEL W/ 513 AF FRAME & GRATE OR EQUIVALENT
 CATCH BASIN: ABT, INC. POLYDRAIN SMALL CATCH BASIN OR EQUIVALENT

- NOTES:**
- FOR WATERPROOFING EXISTING BUILDINGS, SEE SPECIAL PROVISIONS.
 - RAIL ANCHOR, CONTROL ROD AND REINFORCEMENT DEPICTED IN SECTION B-B ARE TYPICAL FOR ENTIRE TRACK NO. 3 CONCRETE SLAB, UNLESS OTHERWISE NOTED.



12/27/2006 3:11:29 PM T:\rail\projects\090084.002_cyl\plans\064st_1s_sect1.sst

NO.	BY	DATE	REVISION

PREPARED BY:
Carter Burgess
 C & B ARCHITECTS / ENGINEERS, P.C.
 5811 GLENWOOD AVENUE, SUITE 300
 RALEIGH, NORTH CAROLINA 27612
 PH: 919-763-5988

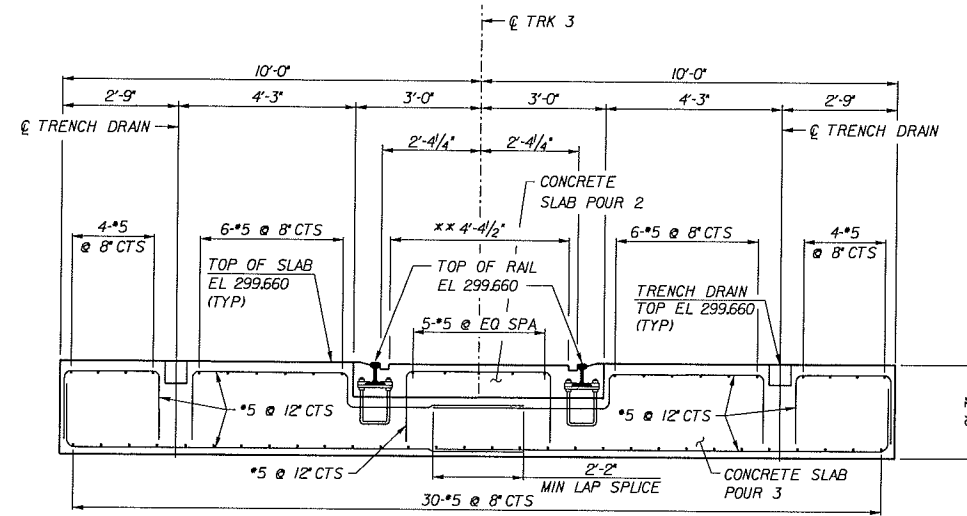
THIS DOCUMENT ORIGINALLY
 ISSUED AND SEALED BY
 STEVEN K. DOERRER, 16572,
 ON AUGUST 10, 2006.
 THIS MEDIA SHALL NOT
 BE CONSIDERED A
 CERTIFIED DOCUMENT.

NORTH CAROLINA DEPARTMENT OF TRANSPORTATION

RAIL DIVISION
 OPERATIONS BRANCH

PROJECT	CAPITAL YARD MAINTENANCE FACILITY		
TITLE	CONCRETE SLAB - SECTIONS AND DETAILS (1)		
LOCATION	860 CAPITAL BOULEVARD, RALEIGH, NC		
DGN BY	JBT	RAILROAD	CSXT
MILE POST	S-156.1		
DWN BY	BAH	VAL SEC	V1-NC, L-7, 5-16
CHK BY	SKD	DATE	07-21-06
SCALE	AS NOTED		SHEET S6 OF S9

TRACK DRAIN: NEENAH R-3420 TRACK DRAIN FRAME & GRATE OR EQUIVALENT
 TRENCH DRAIN: ABT, INC. POLYDRAIN CHANNEL W/ 513AF FRAME & GRATE OR EQUIVALENT

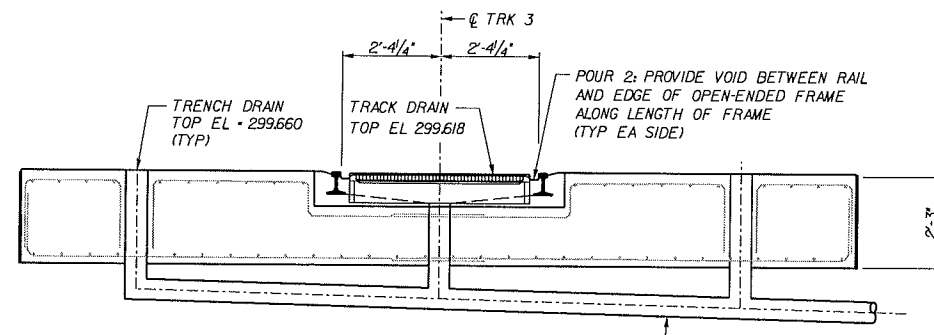


SECTION K-K

SCALE: 1/2" = 1'-0"

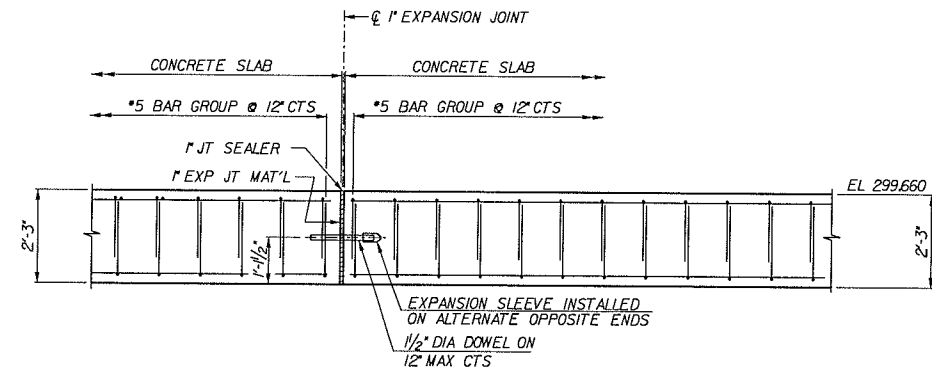
*OPTIONAL LAP SPLICE (AT CONTRACTORS OPTION FULL LENGTH BARS MAY BE EXTENDED FROM POUR 1)

**ELEVATION VARIES. FOR CONCRETE SLAB POUR 2 PROFILE, SEE SHEET S5



SECTION J-J

SCALE: 1/2" = 1'-0"



SECTION L-L

SCALE: 1/2" = 1'-0"


L:\vraill\projects\090064_002_cy\plans\064str_ret1_sect.sht

3:11:41 PM
12/27/2006

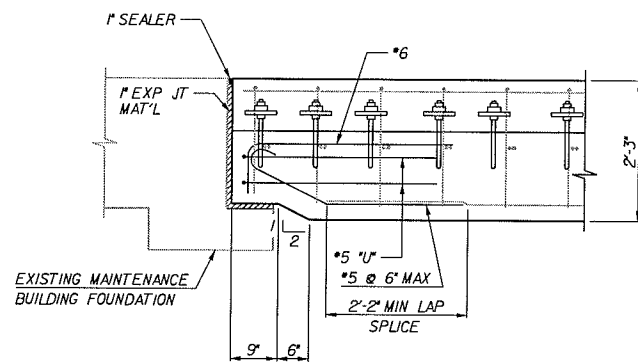
NO.	BY	DATE	REVISION

PREPARED BY:
Carter Burgess
 C & B ARCHITECTS / ENGINEERS, P.C.
 5811 GLENWOOD AVENUE, SUITE 300
 RALEIGH, NORTH CAROLINA 27612
 PH: 919-753-5995

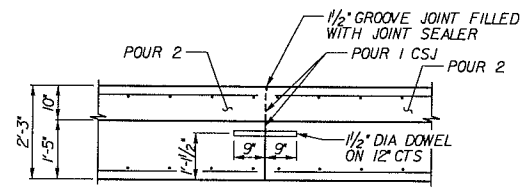
THIS DOCUMENT ORIGINALLY ISSUED AND SEALED BY STEVEN K. DOERRER, 16572, ON AUGUST 10, 2006. THIS MEDIA SHALL NOT BE CONSIDERED A CERTIFIED DOCUMENT.

NORTH CAROLINA DEPARTMENT OF TRANSPORTATION

RAIL DIVISION
 OPERATIONS BRANCH

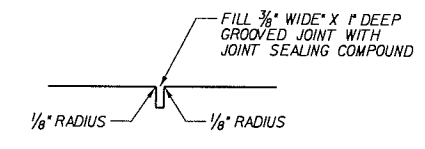
PROJECT: CAPITAL YARD MAINTENANCE FACILITY		TITLE: CONCRETE SLAB - SECTIONS & DETAILS (2)	
LOCATION: 860 CAPITAL BOULEVARD, RALEIGH, NC			
DGN BY: SKD	RAILROAD: CSXT	MILE POST: S-156.1	
DWN BY: JBT	VAL SEC: V1-NC, L-7, 5-16		
CHK BY: BAH	DATE: 07-21-06	SCALE:	SHEET S7 OF S9



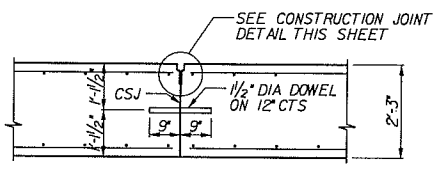
SECTION E-E
SCALE: 3/4" = 1'-0"



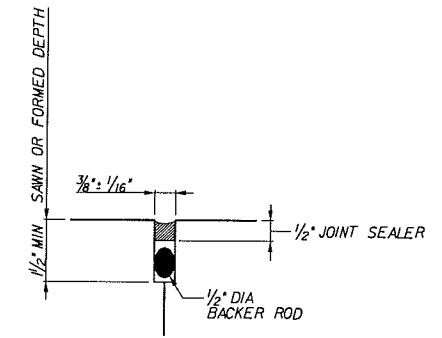
SECTION F-F
SCALE: 1/2" = 1'-0"



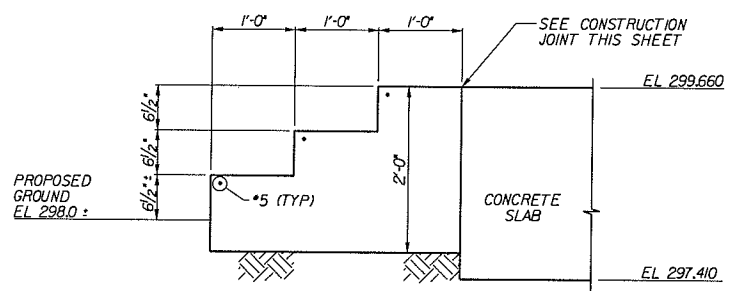
GROOVE JOINT DETAIL
SCALE: 1 1/2" = 1'-0"



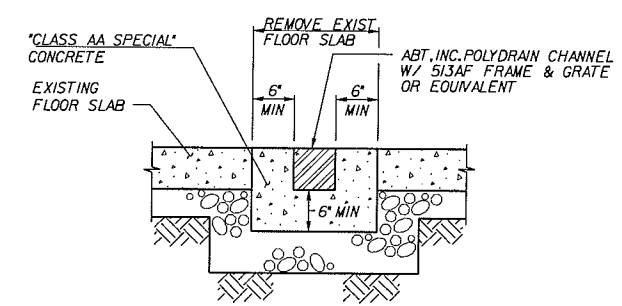
SECTION G-G
SCALE: 1/2" = 1'-0"



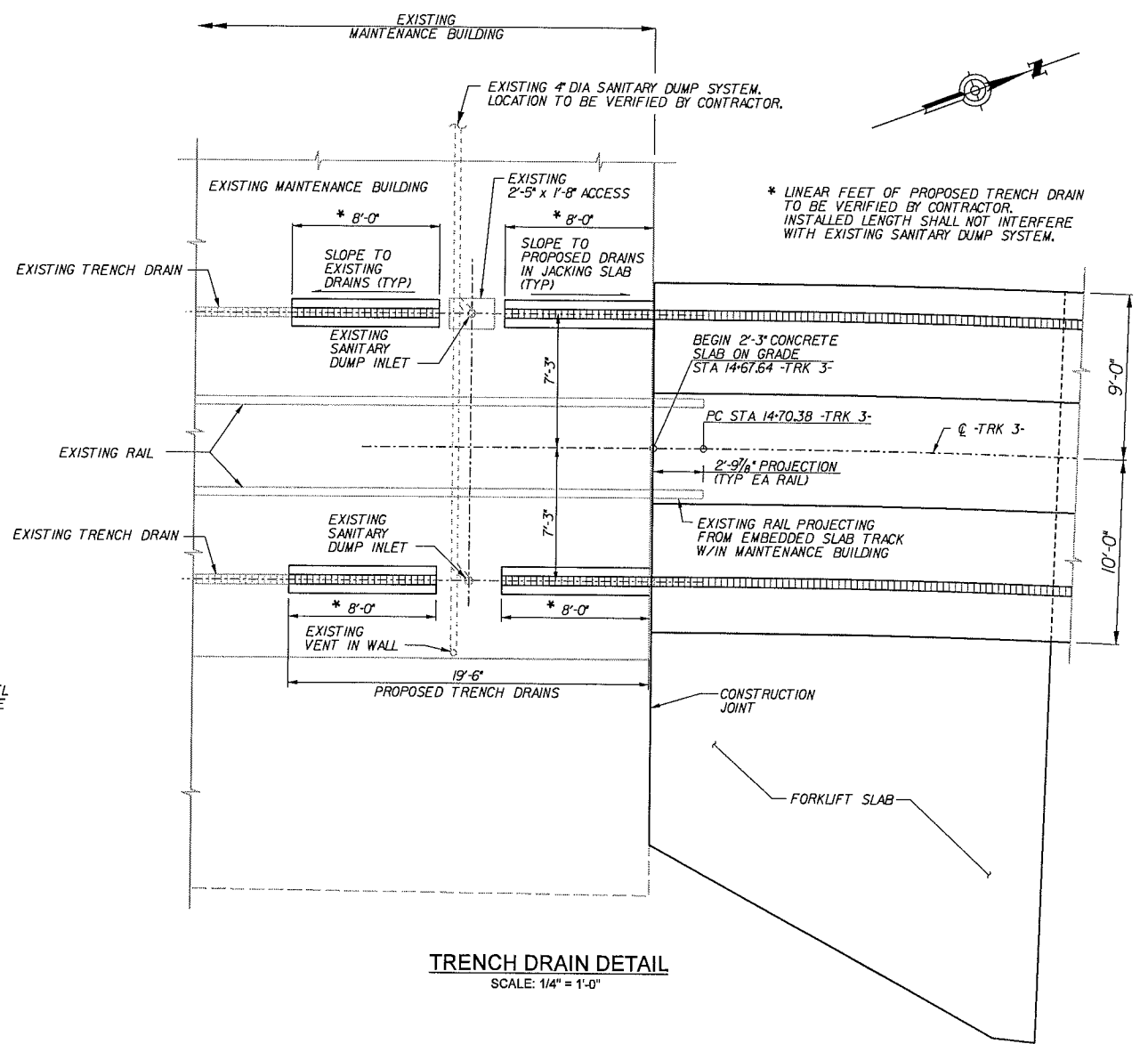
CONSTRUCTION JOINT DETAIL
SCALE: NTS



SECTION D-D
SCALE: 1" = 1'-0"



SECTION THRU PROPOSED TRENCH DRAIN
SCALE: 1" = 1'-0"



TRENCH DRAIN DETAIL
SCALE: 1/4" = 1'-0"

12/27/2006 3:11:54 PM I:\rail\projects\090064_002_cy\plans\064str_is_sect2.sht

NO.	BY	DATE	REVISION

PREPARED BY:
Carter Burgess
C & B ARCHITECTS / ENGINEERS, P.C.
5811 GLENWOOD AVENUE, SUITE 300
RALEIGH, NORTH CAROLINA 27612
PH: 919-763-5888

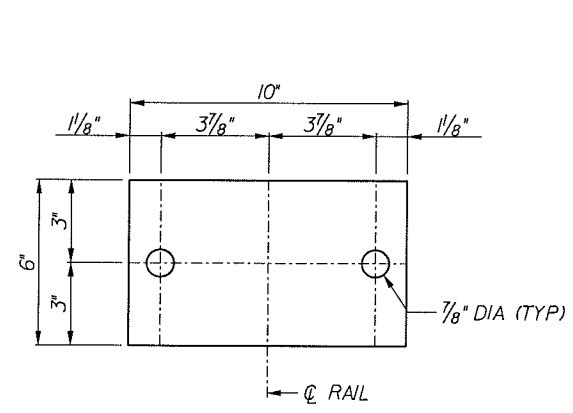
THIS DOCUMENT ORIGINALLY
ISSUED AND SEALED BY
STEVEN K. DOERRER, 16572,
ON AUGUST 10, 2006.
THIS MEDIA SHALL NOT
BE CONSIDERED A
CERTIFIED DOCUMENT.

NORTH CAROLINA DEPARTMENT OF TRANSPORTATION
RAIL DIVISION
OPERATIONS BRANCH

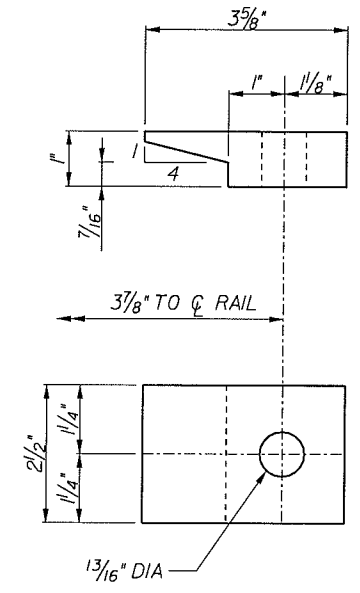
PROJECT: CAPITAL YARD MAINTENANCE FACILITY		TITLE: CONCRETE SLAB - SECTIONS & DETAILS (3)	
LOCATION: 860 CAPITAL BOULEVARD, RALEIGH, NC	DGN BY: JBT	RAILROAD: CSXT	MILE POST: S-156.1
CHK BY: SKD	DATE: 07-21-06	SCALE: VARIES	SHEET S8 OF S9

t:\rail\projects\090084.002_cy\plans\064str_ret1_dwt.sht

12/27/2006 3:12:08 PM



3/4" RAIL BASE PLATE
SCALE: 3" = 1'-0"



TYPE 1 RAIL CLIP
SCALE: 6" = 1'-0"

NO.	BY	DATE	REVISION

PREPARED BY:
Carter=Burgess
C & B ARCHITECTS / ENGINEERS, P.C.
5811 GLENWOOD AVENUE, SUITE 300
RALEIGH, NORTH CAROLINA 27612
PH: 919-793-5986

THIS DOCUMENT ORIGINALLY
ISSUED AND SEALED BY
STEVEN K. DOERRER, 16572,
ON AUGUST 10, 2006.
THIS MEDIA SHALL NOT
BE CONSIDERED A
CERTIFIED DOCUMENT.

NORTH CAROLINA DEPARTMENT OF TRANSPORTATION
RAIL DIVISION
OPERATIONS BRANCH

PROJECT		CAPITAL YARD MAINTENANCE FACILITY	
TITLE		CONCRETE SLAB - SECTIONS AND DETAILS (4)	
LOCATION 860 CAPITAL BOULEVARD, RALEIGH, NC			
DGN BY	JBT	RAILROAD	CSXT
MILE POST	S-156.1		
DWN BY	BAH	VAL SEC	V1-NC, L-7, 5-16
CHK BY	SKD	DATE	07-21-06
SCALE			
			SHEET S9 OF S9