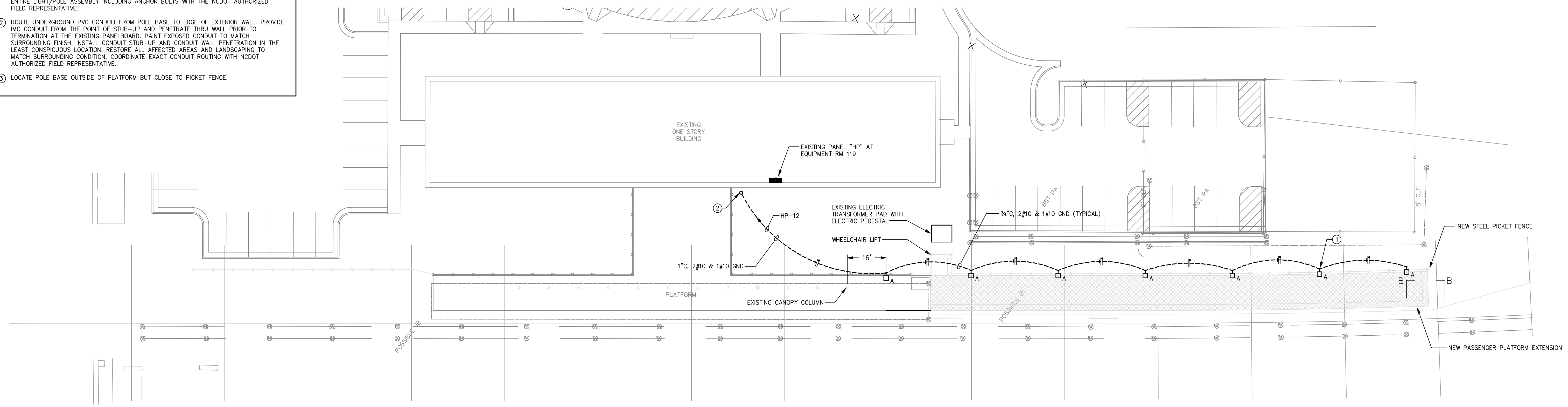


DRAWING E-2 KEYNOTES

- ① THIS POLE-MOUNTED METAL HALIDE LIGHT FIXTURE IS AVAILABLE FROM NCDOT AS AN ITEM FOR RELOCATION FROM A FORMER TEMPORARY STATION SITE. COORDINATE QUANTITY OF ENTIRE LIGHT/POLE ASSEMBLY INCLUDING ANCHOR BOLTS WITH THE NCDOT AUTHORIZED FIELD REPRESENTATIVE.
- ② ROUTE UNDERGROUND PVC CONDUIT FROM POLE BASE TO EDGE OF EXTERIOR WALL. PROVIDE IMC CONDUIT FROM THE POINT OF STUB-UP AND PENETRATE THRU WALL PRIOR TO TERMINATION AT THE EXISTING PANELBOARD. PAINT EXPOSED CONDUIT TO MATCH SURROUNDING FINISH. INSTALL CONDUIT STUB-UP AND CONDUIT WALL PENETRATION IN THE LEAST CONSPICUOUS LOCATION. RESTORE ALL AFFECTED AREAS AND LANDSCAPING TO MATCH SURROUNDING CONDITION. COORDINATE EXACT CONDUIT ROUTING WITH NCDOT AUTHORIZED FIELD REPRESENTATIVE.
- ③ LOCATE POLE BASE OUTSIDE OF PLATFORM BUT CLOSE TO PICKET FENCE.



NCSBC ENERGY CODE COMPLIANCE SECTION 805 ELECTRICAL SYSTEM AND EQUIPMENT

METHOD OF COMPLIANCE: PRESCRIPTIVE PERFORMANCE ENERGY COST BUDGET

LIGHTING SCHEDULE: SEE "LIGHTING FIXTURE SCHEDULE" SEE "LOAD TABULATION"

EQUIPMENT SCHEDULES WITH MOTORS: (NOT USED FOR MECHANICAL SYSTEMS) SEE "MOTOR (LESS HVAC) SCHEDULE"

TO THE BEST OF MY KNOWLEDGE AND BELIEF, THE DESIGN OF THIS BUILDING COMPLIES WITH THE ELECTRICAL SYSTEM AND EQUIPMENT REQUIREMENTS OF THE NORTH CAROLINA STATE BUILDING CODE, ENERGY CODE.

SIGNED: _____

NAME: RODEL A. DATING

TITLE: PROFESSIONAL ENGINEER

ELECTRICAL DRAWING INDEX	
SHEET NUMBER	DESCRIPTION
E-1	SITE PLAN - ELECTRICAL
E-2	SCHEDULES & RISERS



TEETER ENGINEERING GROUP, P.A. HEREBY REPRESENTS ITS CONSULTING AND PROFESSIONAL SERVICES TO THESE DOCUMENTS, AND ASSUMES ALL LIABILITY THEREFOR. THESE DOCUMENTS, SPECIFICATIONS, CONTRACTS, DETAILS, AND DRAWINGS SHALL NOT BE REPRODUCED, COPIED, OR USED IN WHOLE OR IN PART FOR ANY OTHER PROJECT WITHOUT THE WRITTEN PERMISSION OF TEETER ENGINEERING GROUP, P.A. ANY REUSE OR ALTERATION OF THESE DOCUMENTS WITHOUT THE WRITTEN PERMISSION OF TEETER ENGINEERING GROUP, P.A. IS STRICTLY PROHIBITED. CONSULTING ENGINEERS SHALL BE LIABLE IN WHOLE OR IN PART WITHOUT LIMITATION FOR NEGLIGENCE OR MALPRACTICE FROM THE DATE OF THE ORIGINAL DESIGN OF THESE DOCUMENTS.

THIS DRAWING IS AND SHALL REMAIN THE PROPERTY OF GANNETT FLEMING, INC. ANY REUSE OF THIS DRAWING, ALTERED OR UNALTERED, ON PROJECT EXTENSIONS OR ANY OTHER PROJECT SHALL BE AT THE USER'S SOLE RISK AND WITHOUT LIABILITY TO GANNETT FLEMING, INC.

NO.	DESCRIPTION	DATE	BY
REVISIONS			

DRAWN	SCALE	SEAL
RAD	AS SHOWN	
CHECKED	JOB NO.	
RAD	08274	
APPROVED	DATE	
WLT	AUGUST 2008	

PLANS PREPARED BY:

GANNETT FLEMING, INC.
301 S. McDOWELL STREET SUITE 1008
CHARLOTTE, NORTH CAROLINA 28204
PHONE: (704) 375-2438 FAX: (704) 332-9361

CLIENT: NORTH CAROLINA DEPARTMENT OF TRANSPORTATION RAIL DIVISION

PROJECT: ADDITION TO RAIL PASSENGER PLATFORM BURLINGTON, NORTH CAROLINA

TITLE: SITE PLAN - ELECTRICAL

SHEET NO. E-1
DRAWING NO. 2

FILE: K:\39804250 Burlington\Draw\39804250_E-2.dwg DATE: 08-28-07 14:47