

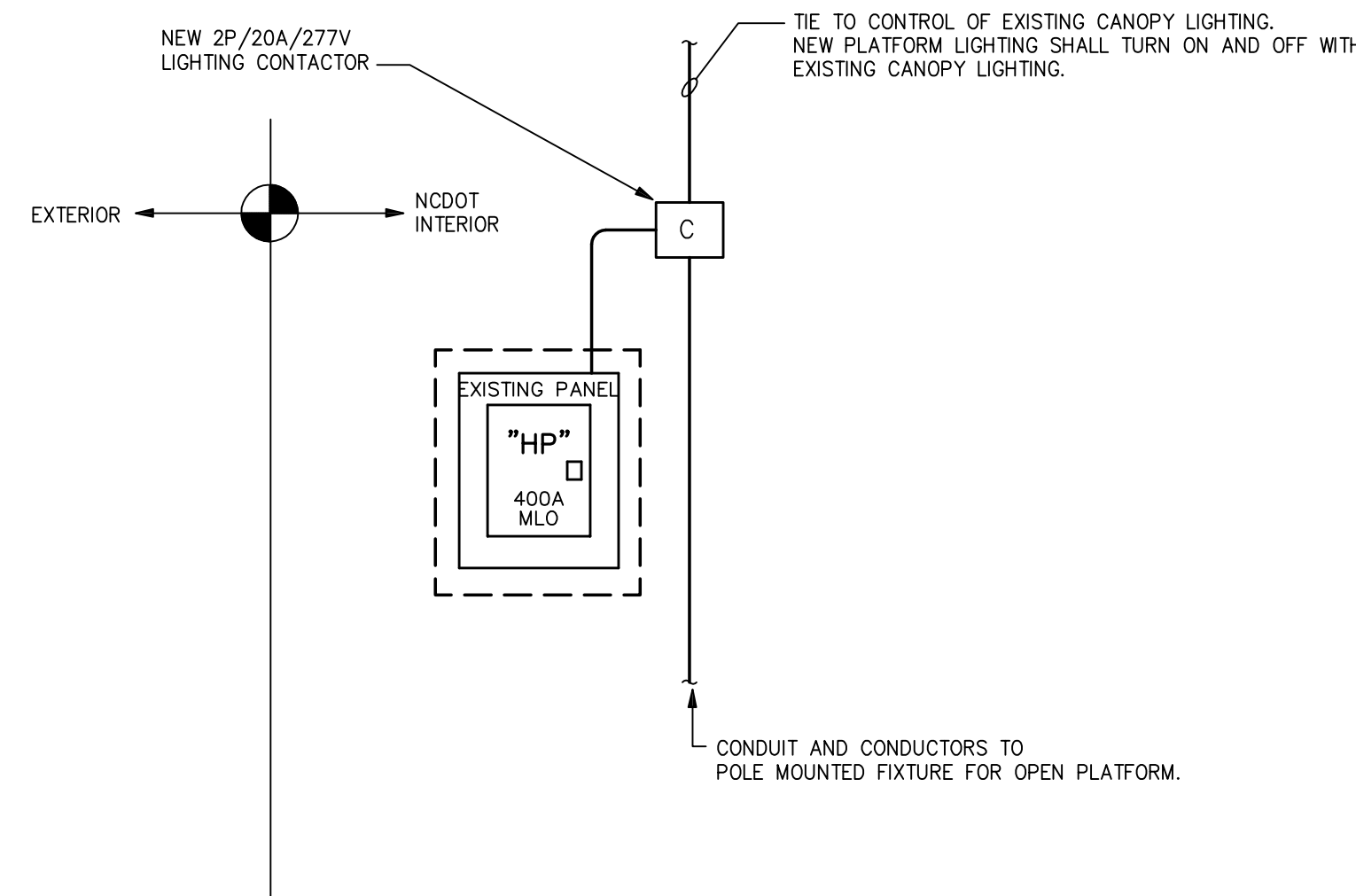
LIGHTING FIXTURE SCHEDULE						
SYMBOL & TYPE	MANUFACTURER & CATALOG NUMBER	DESCRIPTION	LAMP TYPE & QUANTITY	VOLTS/BALLAST	MOUNTING	INPUT WATTS
	ARCHITECTURAL AREA LIGHTING # SLFH22 (FIXTURE) # SLA7 (ARM) # PRS 5R14 (POLE)	DECORATIVE METAL HALIDE FIXTURE, TYPE 3 DISTRIBUTION BLACK FINISH	ONE (1) 100W MH	277V	POLE MOUNTED 14'-0"	139
QUANTITY NOTE LIGHTING FIXTURE PROVIDES A MINIMUM OF 45 LUMENS PER WATT.		NORTH CAROLINA STATE BLDG CODE (NCSBC) SECTION 805, ENERGY CODE COMPLIANCE	TOTAL WATTS FOR PROJECT	N/A		
			TOTAL SQUARE FEET	N/A		
			TOTAL WATTS / SQUARE FOOT	N/A		
			ALLOWED WATTS / SQUARE FOOT	SEE NOTE		

EXISTING PANEL HP
SUPPLY: 480/277V, 3-PH, 4W
MANS: 400A MLO
INTERRUPT RATING: 22K AIC
MOUNTING: SURFACE

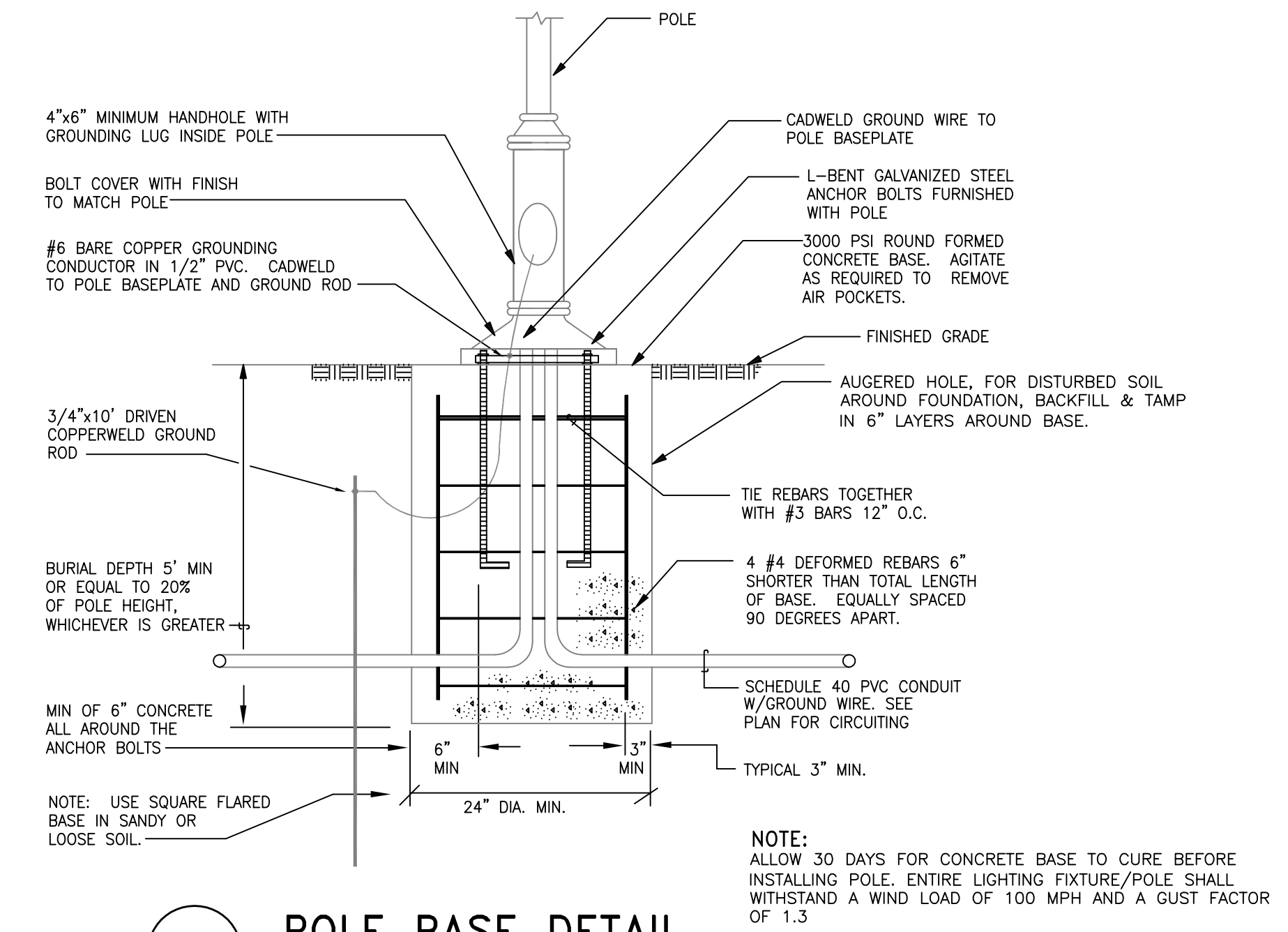
TYPE: BRANCH CIRCUIT
BUS MATERIAL: .
MANUFACTURER: .

PHASE LOAD SUMMARY												
DESCRIPTION	TRIP	POLE	WIRE	CCT	PHASE A	PHASE B	PHASE C	CCT	WIRE	POLE	TRIP	DESCRIPTION
(1) LIGHTING	20	1	E	1	2.1	1.6		2	E	1	20	LIGHTING
(1) LIGHTING/EF-2/EF-3	20	1	E	3		3.3	2.4	4	E	1	20	LIGHTING / EF-5
(1) LIGHTING	20	1	E	5			2.9	2.2	6	E	1	20
(1) OUTDOOR CANOPY LIGHTS	20	1	E	7	1.3	1.4		8	E	1	20	LIGHTING / EF-4
(1) LIGHTING VESTIBULE 102	20	1	E	9		0.7	0.0	10	E	1	20	SPARE
(1) NITE LIGHTS	20	1	E	11			1.1	0.9	12	10	1	20
(1) OUTDOOR WELL & POLE LTS	20	1	E	13	1.0	6.0		14	E	3	30	ELEC WTR HTR
SPARE	20	1	E	15		0.0	6.0	16	.	.	.	WH-1 (18 KW)
SPARE	20	1	E	17			0.0	6.0	18	.	.	.
(1) HP-1	15	3	E	19	3.1	5.8		20	E	3	30	HP-6
.	.	.	.	21		3.1	5.8	22
.	.	.	.	23			3.1	5.8	24	.	.	.
(1) HP-2	15	3	E	25	2.8	8.0		26	E	3	40	HP-7
.	.	.	.	27		2.8	8.0	28
.	.	.	.	29			2.8	8.0	30	.	.	.
(1) HP-3	40	3	E	31	8.0	8.0		32	E	3	40	HP-8
.	.	.	.	33		8.0	8.0	34
.	.	.	.	35			8.0	8.0	36	.	.	.
SPACE	.	.	.	37	0.0	0.0		38	.	1	.	SPACE
SPACE	.	.	.	39				40	.	1	.	SPACE
SPACE	.	.	.	41			0.0	0.0	42	.	1	SPACE
TOTAL KVA PER PHASE					49.2	48.1	48.8					
TOTAL KVA ALL PHASES					146.1 KVA							
MAXIMUM AMPS HEAVIEST PHASE					177.4 AMPS							
MAXIMUM AMPS AT 125%					221.7 AMPS							

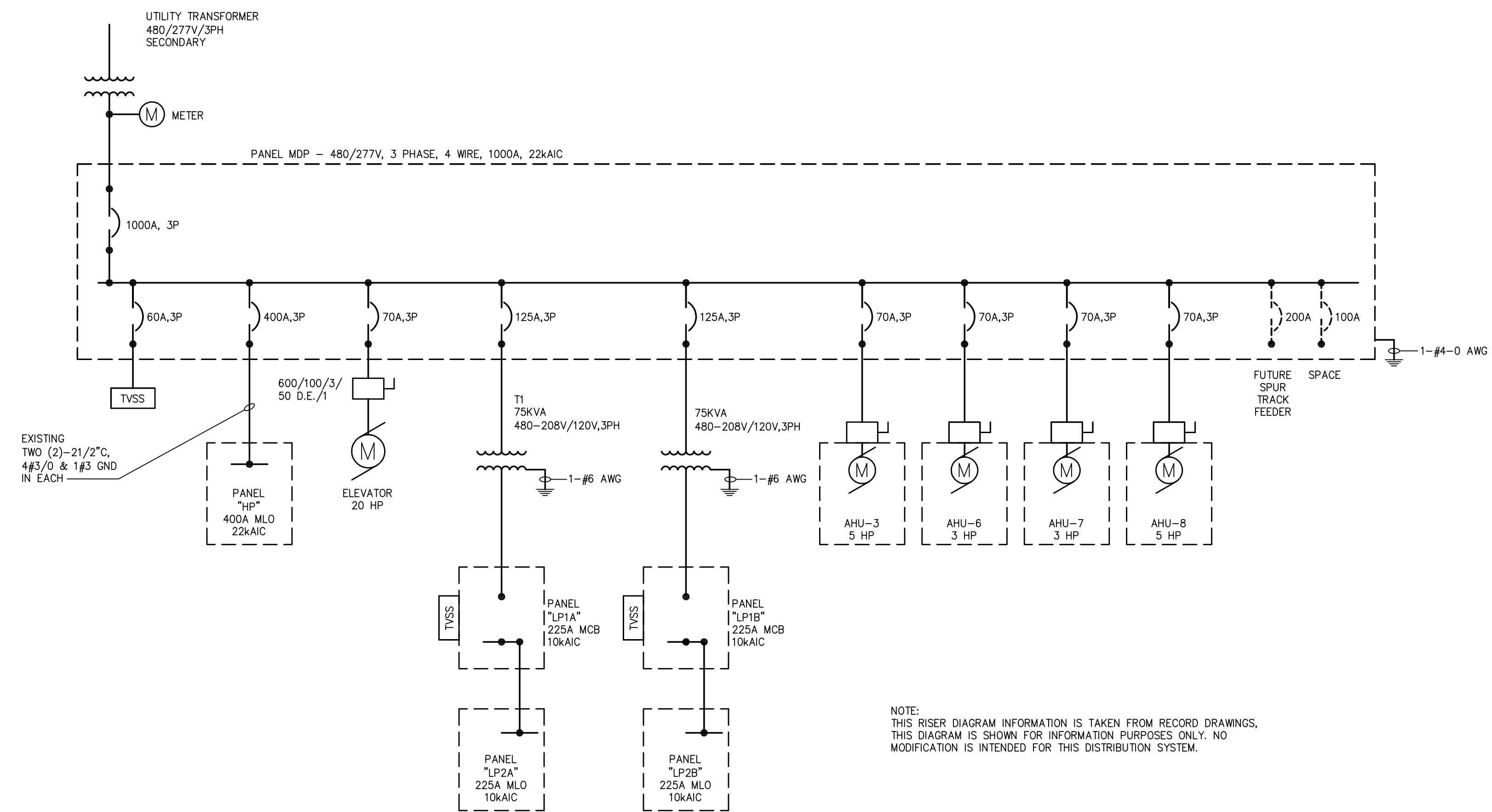
REQUIREMENTS:
1. EXISTING CIRCUIT TO REMAIN IN SERVICE.
2. USE EXISTING SPARE BREAKER. PROVIDE NEW WIRES AND CONDUIT.



1 LIGHTING CONTROL DIAGRAM
DIAGRAMMATIC



2 POLE BASE DETAIL
DIAGRAMMATIC



NOTE:
THIS RISER DIAGRAM INFORMATION IS TAKEN FROM RECORD DRAWINGS.
THIS DIAGRAM IS SHOWN FOR INFORMATION PURPOSES ONLY. NO
MODIFICATION IS INTENDED FOR THIS DISTRIBUTION SYSTEM.

3 EXISTING POWER RISER DIAGRAM
DIAGRAMMATIC

Teeter
ENGINEERING
GROUP, P.A.
4059 YANCEY ROAD / SUITE A
CHARLOTTE, NORTH CAROLINA 28217
PHONE: (704) 376-2999
FAX: (704) 376-3999

TEETER ENGINEERING GROUP, P.A. HEREBY RECEIVES ITS CONTRACT LAW
COPYRIGHT AND ALL OTHER PROPERTY RIGHTS TO THESE DOCUMENTS AND
ASSOCIATED INFORMATION, DESIGN, CONCEPTS, DETAILS, AND DATA SHALL
NOT BE REPRODUCED, COPIED, OR USED IN ANY MANNER WITHOUT THE
WRITTEN PERMISSION FROM TEETER ENGINEERING GROUP, P.A. AND ELECTRONIC
COPYING OF THESE DOCUMENTS ARE SOLE PROPERTY OF TEETER
ENGINEERING GROUP, P.A. AND ARE STRICTLY FOR OFFICIAL AND LEGAL
PURPOSES ONLY. CONTRACT FILES SHALL BE OFFICE IN WHOLE OR IN
PART WITHOUT WRITTEN PERMISSION FROM TEETER ENGINEERING GROUP, P.A.

THIS DRAWING IS AND SHALL REMAIN THE PROPERTY OF GANNETT FLEMING, INC. ANY REUSE OF THIS DRAWING, ALTERED OR UNALTERED, ON PROJECT EXTENSIONS OR ANY OTHER PROJECT SHALL BE AT THE USER'S SOLE RISK AND WITHOUT LIABILITY TO GANNETT FLEMING, INC.

NO.	DESCRIPTION	DATE	BY
REVISIONS			

DRAWN	SCALE	SEAL
RAD	AS SHOWN	
CHECKED	JOB NO.	
RAD	08274	
APPROVED	DATE	
WLT	AUGUST 2008	

PLANS PREPARED BY:
Gannett Fleming
GANNETT FLEMING, INC.
301 S. McDOWELL STREET SUITE 1008
CHARLOTTE, NORTH CAROLINA 28204
PHONE: (704) 375-2438 FAX: (704) 332-9361

CLIENT: NORTH CAROLINA DEPARTMENT OF TRANSPORTATION RAIL DIVISION
PROJECT: ADDITION TO RAIL PASSENGER PLATFORM BURLINGTON, NORTH CAROLINA

TITLE: SCHEDULES & NOTES
SHEET NO. E-2
DRAWING NO. 2